



An OSC Technologies Company

**WILLIAMS  
& HUSSEY**  
Machine & Tool Company

# Molder Catalog

The Gold Standard in Quality Molders & Knives Since 1954.



Toll Free: 800-258-1380 | 641-843-3240 | [williamsnhussey.com](http://williamsnhussey.com)

## TABLE OF CONTENTS

Our History .....page 2

Why Choose Williams & Hussey .....page 3

Why Make Your Own Molding? ..... page 4

Who Uses Williams & Hussey Molders? .....page 5

The Williams & Hussey Difference ..... page 6

Molder Models .....page 7

Molder and Electrical Specifications ..... page 8

Accessories ..... page 9

Extension Tables & Material Handling ..... page 10

Upgrade Path ..... page 11

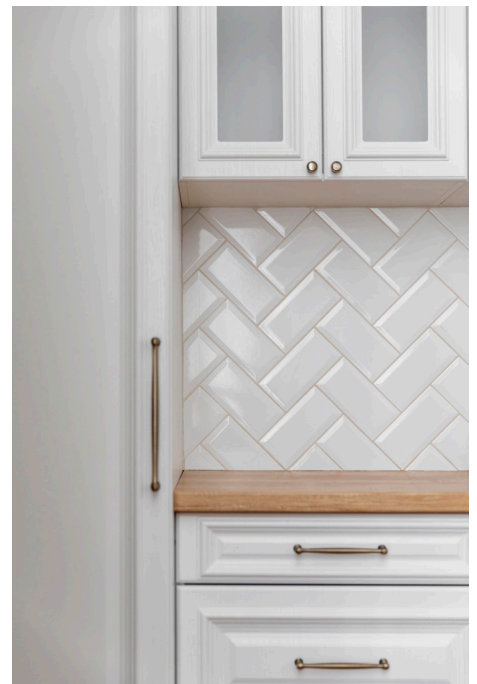
Replacement Parts .....page 12

Knives: Standard, Custom & Sharpening .....page 13

Order Custom Knives / Browse Standard Profiles..... page 14

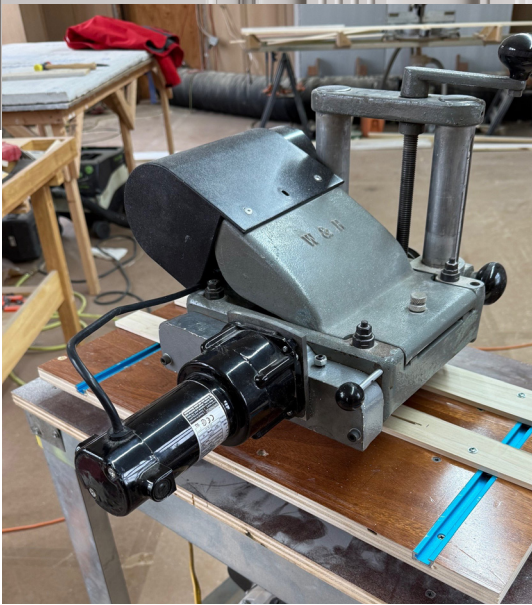
Factory Service & Support ..... page 14

Warranty ..... page 14



*For over 70 years, Williams & Hussey has crafted American-made woodworking machinery trusted by professionals across the country. Our machines and knives are known for durability, precision, and the ability to deliver flawless molding profiles with ease.*

*From custom woodworking shops to architectural millwork firms and restoration specialists, W&H molders stand the test of time. Many of our machines from the 1950s are still running today and we continue to support them.*



## Our History

Williams & Hussey has been a trusted name in American woodworking since 1954. What began as a small New Hampshire tool company has grown into a nationally recognized manufacturer of planer molders, profile knives and woodworking accessories used by craftsmen, furniture makers, and millwork shops across the country.

For decades, W&H machines were built in Milford, New Hampshire, earning a reputation for reliability, simplicity, and the ability to produce flawless molding with minimal setup. Many of those early machines from the 1950s, 60s, and 70s are still in daily use today, a testament to the durability and craftsmanship that define the W&H brand.

In 2020, Williams & Hussey joined Original Saw Company and moved production to Britt, Iowa, where its legacy continues. Today, every W&H molder and knife is engineered, machined, assembled, and tested in the USA using high-quality materials and proven manufacturing practices.

# WHY CHOOSE

Williams & Hussey



## American Made Craftsmanship Since 1954

For more than 70 years, Williams & Hussey has built dependable, American-made molding equipment trusted by professionals nationwide. Every W&H machine is engineered, machined, assembled, and tested in Britt, Iowa. Designed for precision, durability, and long-term value.

## What Makes W&H Different:

- Mold straight, radius, and elliptical profiles on one machine
- Open ended design for wide boards, doors, and panels
- Quick change knives and simple operation for minimal training
- Variable feed speed for a premium finish on all wood species
- Multi pass capability for deep, detailed, or hardwood profiles
- Over 260 standard knives plus fast-turnaround custom knives
- Premium M2 high speed steel (HSS) knives for long edge retention and clean cuts
- Factory support for legacy machines still in daily use
- In-house sharpening, gearbox rebuilds, and technical support
- Made in the USA with local suppliers and domestic materials

*The Williams & Hussey molder has really expanded what I could do for customers. A lot of my customers like the idea of having a unique molding for their houses. A few of them have created their own designs.*

- John Kelly, JFK Construction



# WHY MAKE

## Your Own Molding?

*“The molder has a very simple design, has been ruggedly built for years of service, and is very, very, very easy to set up for any application. It is compact enough to fit in any size shop.”*

- Steve Kiefaber, hobbyist woodworker



Producing your own molding gives you greater control, better margins, and design flexibility that store-bought trim can't match.

- Total Design Freedom - Create straight, radius, or elliptical profiles without limitations
- Perfect Matches - Replicate historical trim or match existing moldings exactly
- Consistent Quality - Control the wood species, grain, and finish for repeatable results
- Faster Turnaround - Run molding on demand instead of waiting on suppliers
- Lower Cost per Foot - Turn rough stock into premium trim
- Competitive Advantage - Offer custom details that others can't provide



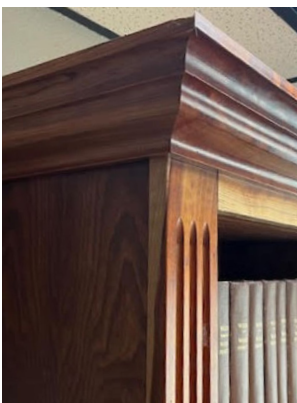
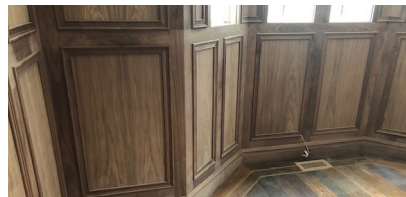
# WHO USES

Williams & Hussey Molders?

- **Custom Cabinet & Millwork Shops**  
High quality trim, doors, and panel moldings.
- **Architectural Woodworkers**  
Precision molding for high end residential and commercial projects.
- **Home Builders & Remodelers**  
Produce unique moldings on demand—no store bought limitations.
- **Restoration Carpenters**  
Recreate historic details with perfect accuracy.
- **Furniture Makers**  
Add decorative edge profiles and custom details.
- **Schools & Training Programs**  
Durable, simple to operate equipment for teaching real world skills.



**Trusted Across the Woodworking Industry**  
W&H machines are engineered to meet the needs of professionals across multiple industries.



*“Don't hesitate if you see the need to implement this machine. Within the first home you do a custom trim package for, you will recover the cost. Every job after that is almost all labor and profit. Set yourself apart and offer limitless possibilities.”*

- Kurt Ballash, owner of Ballash Woodworks

All molder designs and profiles shown here were created and submitted by customers.

# THE WILLIAMS & HUSSEY DIFFERENCE

One Machine. Three Applications. Infinite Possibilities.

W&H molders give woodworkers the flexibility to produce professional grade molding in three distinct styles.



01.

## Straight Molding

Fast setup. Clean finish. Profiles from 1/4" to 6 3/4" wide.



02.

## Radius Molding

Use customer supplied radius guides and segmented stock.



03.

## Elliptical Molding

Create changing radius profiles using the Elliptical Jig.



# MODEL 206

## Professional-Grade Production Power

### Variable Feed: 0–19 FPM

Designed for full-time production environments, the Model 206 delivers the same smooth, professional finish Williams & Hussey is known for—paired with expanded power options for high-volume shops.

### Why Choose the Model 206:

- Produces the smoothest possible finish with variable feed control across all wood species
- Ideal for hardwoods, deep profiles, and demanding applications
- Multiple voltage and phase options for seamless shop integration
- Built for long production runs and continuous use

### Best For:

Custom millwork shops • Architectural woodworkers • Production environments

### Model Options:

206.208/230.1 V2.5 — Single Phase

206.208/230.3 V2.5 — Three Phase

206.208/230.1.50 V2.5 — 50Hz



# MODEL 209

## Professional Performance on Standard 115V Power

### Variable Feed: 0–19 FPM

The Model 209 offers the same cutting performance and finish quality as the Model 206, in a compact, portable design that runs on standard household power

### Why Choose the 209:

- Produces the smoothest possible finish with variable feed control across all wood species
- Ideal for hardwoods, deep profiles, and demanding applications
- Operates on a standard 115V / 20A circuit
- Easily moved within the shop or transported to job sites (especially with mobile base)

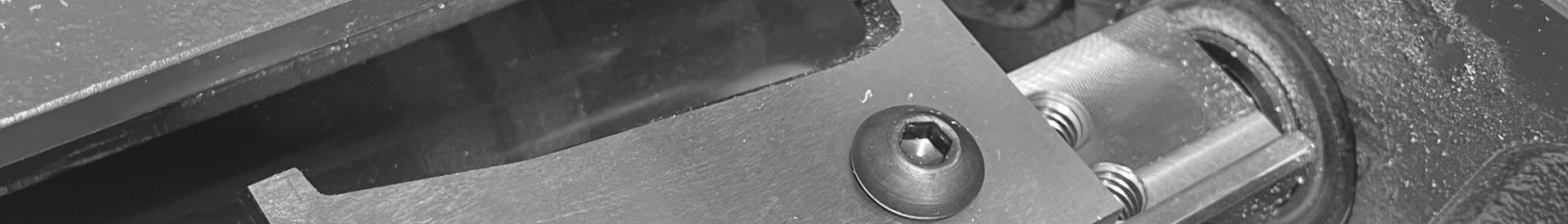
### Best For:

Contractors • Renovation shops • Job sites • 115V-only workspaces

### Model Option:

209.115.1 V2.5





## Molder Specifications — Common to Models 206 & 209

SPECIFICATION	DETAIL
Machine Stand	24"L × 24"W × 33"H, Steel Construction
Guide System (Included)	23 1/2"L × 11 3/4"W × 1/2" HDPE
Arbor RPM	6960 RPM
Max. Profile Depth	3/4"
Minimum Stock Length	9"
Maximum Profile Width	6 3/4"
Minimum Stock Thickness	1/4"
Maximum Height Above Final Cut	3/16"
Maximum Stock Thickness	7"
Planes	7" Wide
Overall Machine Dimensions	24"L × 24"W × 50"H
Working Height	35"
Shipping Weight	Approximately 315 lbs.
Skid Dimensions	36"L × 36"W × 60"H

## Electrical Specifications — Model Comparison

SPECIFICATION	206 (Single Phase)	206 (3 Phase)	206 (50Hz)	209 (115V)
Model Number	206.208/230.1 V2.5	206.208/230.3 V2.5	206.208/230.1.50 V2.5	209.115.1 V2.5
Voltage	208/230V	208/230V	208/230V (50Hz)	115V / 20A Circuit
Feed System	Variable Feed 0–19 FPM	Variable Feed 0–19 FPM	Variable Feed 0–19 FPM	Variable Feed 0–19 FPM
Knife Motor	2 HP	2 HP	2 HP	1 1/2 HP
Full Load Amps	8.8	5	8.8	15
Phase	Single Phase	3 Phase	Single Phase	Single Phase
Cutterhead RPM	3450	3490	3000	3450

### Key Difference Between Models:

Model 209 offers the same performance features as the 206 but operates on a standard 115V household circuit with a 1 1/2 HP motor, making it ideal for smaller shops, job sites, and low-power environments.

# ACCESSORIES

Expand Your  
Molder's Capability

All Williams & Hussey accessories are engineered to integrate seamlessly with Models 206 and 209, extending your machine's versatility, accuracy, and efficiency. Each accessory is designed for long-term reliability in professional shop environments and manufactured in the USA.

## Elliptical Jig

Produce Precision Curved & Elliptical Moldings

Transform your W&H molder into a powerful shaping system for curved and elliptical profiles. The Elliptical Jig allows you to create custom arched trim for doors, windows, furniture, and architectural millwork—work that would otherwise require complex setups or hand shaping.

### Key Benefits

- Produces accurate curved and elliptical moldings up to 6-1/2" wide
- CNC-routed HDPE table for smooth, repeatable cuts
- Floating and fixed bearing system for secure stock handling
- Quick installation using existing molder mount points
- Compatible with all Williams & Hussey molder models

### Why You'd Add This:

Add the Elliptical Jig when you need to produce arched doors, curved windows, or radius trim in-house—especially for restoration work, custom millwork, furniture, and architectural projects.



## Mobile Base for Molders

Move Your Molder with Confidence

Convert your stationary molder into a fully mobile unit with a purpose-built base engineered specifically for W&H machines.

### Key Benefits:

- 600 lb capacity
- Four 3" locking casters for 360° movement
- Locks firmly for vibration-free operation



### Why You'd Add This:

Add a mobile base when shop space is limited or when you need the flexibility to reposition your molder between jobs.



## Shaper Heads

Use W&H Knives on Other Molders & Shapers

Williams & Hussey shaper heads allow your W&H profile knives to be used on other brands of molders and shapers, expanding the value of your knife inventory across multiple machines.

### Key Benefits:

- Compatible with Extrema, Weinig, Wadkin, SCMI, Mikron, US Concepts, and others
- Available in 4" and 6" configurations
- Accepts knives with 3/8" bolt holes
- Larger bore sizes available upon request

### Why You'd Add This:

Add shaper heads when you want to standardize tooling across multiple machines and maximize the return on your W&H knife investment.



All accessories are compatible with Models 206 and 209.

# Extension Tables & Material Handling

Proper infeed and outfeed support is essential for consistent results—especially with long or heavy stock. Williams & Hussey offers both flat and roller extension table options to match your workflow.

## Flat Extension Tables

### Stable, Stationary Support for Long Stock

Heavy-gauge steel tables provide a solid, stationary surface for infeed and outfeed operations, improving safety and material control.

#### Key Benefits:

- Available in 2", 4", 6", 8", and 10" lengths
- Adjustable legs for precise height alignment
- Ideal for wide or delicate stock requiring full surface support

#### Why You'd Add This:

Choose flat extension tables when you need maximum stability and support for wide profiles, delicate material, or jobs requiring full surface contact.



## Extension Table Brackets

### Required for Table Installation

Heavy-duty steel brackets provide the secure mounting interface between the molder stand and extension tables.

#### Key Benefits:

- Precision-cut slots for accurate alignment
- Eliminates vibration and table movement
- Required for both flat and roller extension tables

#### Why You'd Add This:

Extension table brackets are required to properly install any extension table and ensure accurate, vibration-free operation.



## Roller Extension Tables

### Smooth, Effortless Feeding for Heavy or Long Boards

Free-spinning rollers support long runs while reducing operator fatigue and preventing snipe.

#### Key Benefits:

- Available in 4" and 8" configurations
- Improves feed consistency and single-operator workflow
- Recommended for long hardwood runs and production environments

#### Why You'd Add This:

Add roller extension tables when running long, heavy, or high-volume material where smooth feeding and efficiency are critical.

## Extension Table Mobile Base

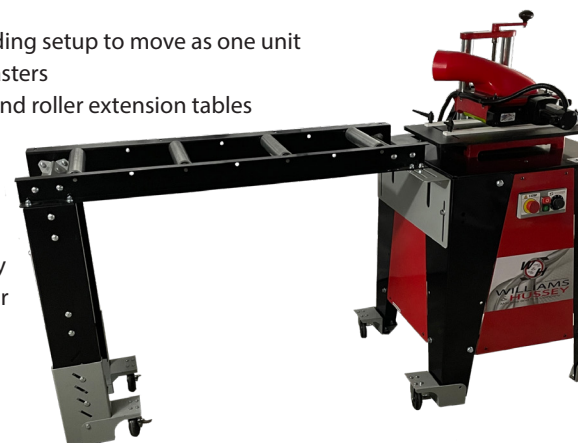
Maintain full mobility even with long infeed and outfeed tables installed.

#### Key Benefits:

- Allows the entire molding setup to move as one unit
- Heavy-duty locking casters
- Compatible with flat and roller extension tables

#### Why You'd Add This:

Choose the extension table mobile base when you want full-shop mobility without disassembling your molding setup.



# UPGRADE PATH

## For Older Molders

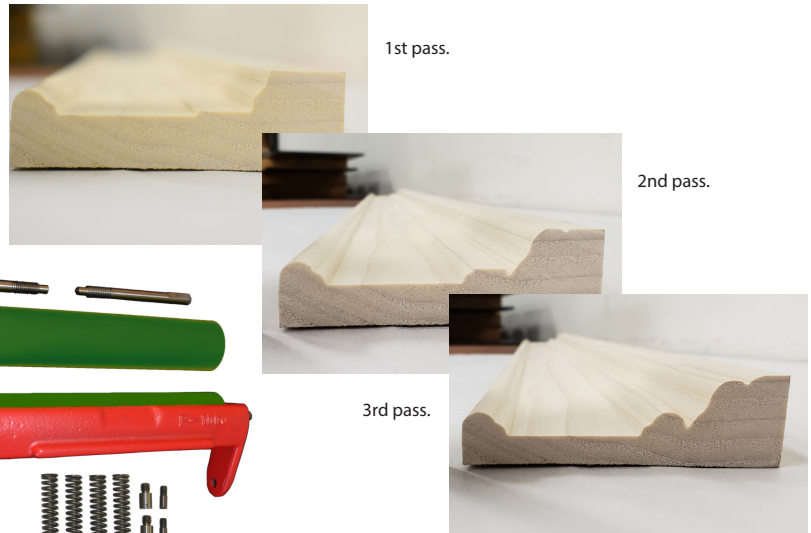
**Many W&H molders built decades ago are still in daily production.** Factory upgrade kits allow you to modernize performance and expand capabilities without replacing your machine.

### Multi-Pass Kit

Cut Deeper, More Complex Profiles

- Enables deep and detailed profiles
- Reduces cutter load and knife wear
- Improves control on dense materials

*Recommended for owners of single-pass W&H molders who want to upgrade to multi-pass capability for deeper profiles, improved control, reduced cutter load, and smoother finishes—especially in hardwoods and wide cuts.*



### Variable Feed Kit

Add Precision Speed Control

- Variable feed speed from 0–19 FPM
- Improves finish quality and reduces burning
- Ideal for hardwoods and detailed profiles

*Recommended for owners of constant-speed W&H molders looking to upgrade to variable feed control for improved finish quality, reduced burning, and better performance across different wood species.*



### Chip Extractor & Head Assembly

Cleaner Cuts, Better Performance

- Improves chip evacuation at the cutterhead
- Reduces recutting for a cleaner finish
- Enhances visibility and cutting consistency

*Recommended for shops looking to improve chip removal at the cutterhead for cleaner cuts, reduced recutting, and more consistent finishes—especially during longer runs or higher-volume production.*



### Conversion Kit for Single-Phase Molders

Modernize Electrical Components

- Updates older systems to modern standards
- Improves reliability and serviceability
- Factory-engineered for specific W&H models

*Recommended for owners of constant-speed, single-pass W&H molders who want to upgrade to both variable feed and multi-pass capability for maximum control, smoother finishes, and greater versatility in demanding applications.*



**Compatibility Note:** Upgrade availability varies by molder age and configuration. Our technical support team can help identify the correct upgrade path for your machine.

# REPLACEMENT PARTS

Keep Your W&H Molder Running at Peak Performance

**Genuine W&H replacement parts** restore accuracy, reliability, and safe operation for both current and legacy machines.

## Feed Roll Kits

Restore Proper Feeding & Finish

- Improves material control and surface quality
- Available in multiple durometers
  1. Yellow (60D): Short runs, delicate profiles
  2. Green (70D): Long runs, sharp edges

*Recommended for molders experiencing inconsistent feeding, uneven cutting, slippage, or finish issues caused by worn or hardened feed rolls, especially on older machines or high-hour production molders.*

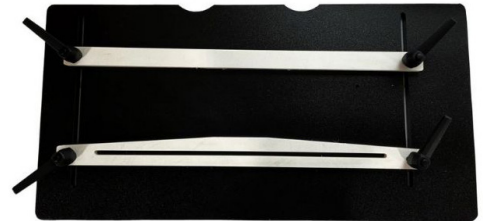


## Guide System Components

Maintain Profile Accuracy

- Ensures proper material tracking
- Improves repeatability across long runs

*Recommended for every molding machine performing straight runs with tracking issues, inconsistent profile depth, or reduced repeatability due to worn or misaligned guide system components.*



## Knife Motors

Restore Cutting Power

- Maintains correct cutterhead RPM
- Improves cut quality and reliability

*Recommended for molders with reduced cutting performance, excessive noise, overheating, or difficulty maintaining proper cutterhead RPM.*



## Variable Feed Motors

Maintain Smooth Speed Control

- Restores variable feed performance
- Improves finish consistency

*Recommended for machines with inconsistent or erratic feed speed, feed hesitation or failure, loss of variable feed control, or declining finish quality due to worn or failing variable feed motors.*



## Sub-Assemblies

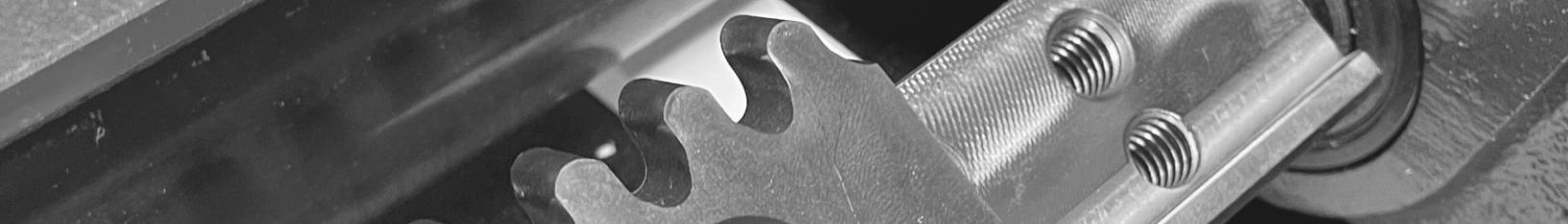
Reduce Downtime

- Factory-assembled for faster repairs
- Simplifies maintenance and installation

*Recommended for shops seeking faster repairs and reduced downtime by replacing complete factory-assembled components instead of rebuilding individual parts, feed issues, loss of feed adjustment on sub-assemblies.*



**Compatibility Note:** Parts availability varies by model and production year. Factory support can help identify the correct components.



# KNIVES: STANDARD, CUSTOM & SHARPENING

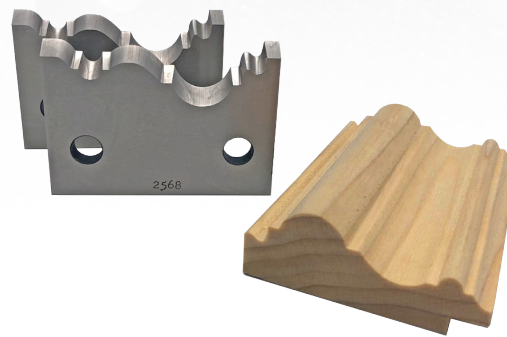
## Professional-Grade Profiles for Every Project

### Premium M2 High Speed Steel (HSS)

Every W&H knife is crafted from premium M2 high-speed steel, delivering superior sharpness, long edge retention, reduced burning, and consistent professional results across all wood species.

### What Sets W&H Knives Apart

- Premium M2 HSS for durability and heat resistance
- Precision-ground profiles for accurate, repeatable cuts
- OEM-fit compatibility for W&H cutterheads
- Long edge life with cleaner cuts and less sanding



## Standard Knives — 260+ Profiles

Our extensive knife library includes over 260 standard profiles used in cabinetry, millwork, furniture, and architectural restoration. Popular categories include:

Casings • Crowns • Base Caps • Astragals • Picture Frames • Beads & Quirks • Nickel Gap • Stops • Many more

Each knife is engineered for clean, accurate molding and consistent performance run after run.



### SHARPENING SERVICE

Keep your knives performing like new.

- Fast 1–2 day turnaround time
- Maintains original profile accuracy
- Affordable, dependable service

## Custom Knife Grinding - A W&H Specialty

Custom knives are a core part of what we do. Whether you are replicating a historic molding, matching an existing profile, or creating something entirely new, W&H delivers precise, repeatable custom tooling from your sketch, sample, drawing, or CAD file.

All knife grinding is performed in-house by experienced tooling specialists, ensuring accuracy, consistency, and fast turnaround times.

With more than 70 years of knife-making expertise, we produce both simple and deep-cut profiles with flawless accuracy—profiles that many manufacturers cannot match. Every custom knife is engineered for safety, stability, and exceptional performance on your W&H molder.

# Order Custom Knives

<https://www.williamsnhussey.com/product/custom-knives/>

Scan to upload a sketch, drawing, or sample details.



# Browse Standard Profiles

<https://www.williamsnhussey.com/product-category/molding-knives/>

Explore 260+ molding patterns.



---

# Factory Service & Support

## Your Partner in Molding Excellence

A W&H molder is built to last for decades—and so is the support behind it. Our factory team provides expert service for both new and legacy machines.

Our Services Include:

- Knife sharpening with fast turnaround
- Technical support and application guidance
- Replacement parts for current and legacy models
- Factory gearbox repairs
- Manuals, wiring diagrams, and resources

Supporting machines built as early as 1954.

## Download Manuals & Diagrams

Access model manuals, wiring diagrams, setup guides, and reference documents.

<https://www.williamsnhussey.com/operators-manuals/>



---

# Warranty

W&H molders and accessories include a 1-Year Limited Warranty covering defects in materials and workmanship.

RMA authorization is required for returns.



For full warranty terms, scan the code or visit our website.  
<https://www.williamsnhussey.com/warranty-information/>

**Safety Notice**

Always operate W&H machinery according to the owner's manual and all applicable safety standards. Read and understand all warnings, setup instructions, and operating procedures before use.



465 3rd Ave SE  
Britt, IA 50423  
(800) 258-1380  
(641) 843-3240

[customerservice@williamsnhussey.com](mailto:customerservice@williamsnhussey.com)

[www.williamsnhussey.com](http://www.williamsnhussey.com)

Copyright © 2026 Williams & Hussey Machine and Tool Co.

02/26



Specifications subject to change without notice.